

1st FLEET'S HERE! 4 Picture Pages



SAN FRANCISCO

News-Call Bulletin

9 STAR
FINAL
SPORTS
PICTORIAL

Vol. 2, No. 27

38 Pages

FRIDAY, SEPTEMBER 9, 1960

Phone EXbrook 7-5700

Single Copy Price 10c

Mighty Fleet Arrives For S. F. Festival

Twenty-two gray-clad units of the mighty U. S. First Fleet, guardian of millions of square miles of the vast Pacific, arrived here today to herald the opening of San Francisco's third annual Pacific Festival.

The ships were gray and so was the day, but that didn't keep thousands of spectators from lining the shores of the Bay along San Francisco's Marina.

They came with binoculars, children and cameras to watch the fleet—almost ghostly in the September haze—slide beneath the Golden Gate Bridge.

The heavy cruiser Los Angeles, flagship of the force, entered the Golden Gate ahead of the other fighting ships and auxiliaries to take a position off the Marina Green.

SHE WAS boarded by Adm. John H. Sides, commander in chief of the Pacific Fleet, who reviewed the armada as it entered the Bay in single file at noon.

It was one of Adm. Sides' first official functions since he assumed his new command Aug. 31. He flew here yesterday from his Pearl Harbor headquarters.

Most of the 22 review ships and 15 others will be here throughout the 10-day festival and will turn some 20,000 officers and enlisted men loose on the Bay Area. Open house for the public will be held daily, beginning tomorrow, from 1 to 4:30 p. m. on the vessels at various San Francisco and East Bay ter-

minals and on Treasure Island.

FLEET participation in the festival includes appearances by various bands, notably a one-hour concert every day next week in Union Square by the Amphibious Force band preceding the noontime fashion shows.

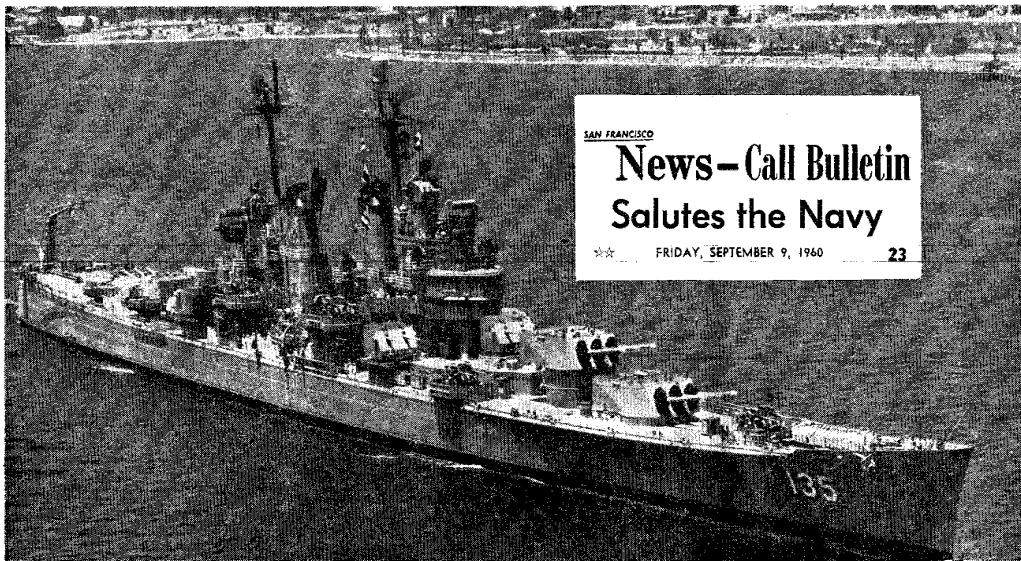
SEVERAL of the ships have invited the public to participate in religious services on board Sunday.

Among these is the 75,000-ton Ranger, an attack carrier that is rated the largest warship in the world. The Ranger will have Protestant services at 9 a. m. and Catholic mass at 10 a. m.

Other Protestant services will be held on the USS Eldorado, flagship of Amphibious Group One, at 10 a. m. and on the carrier USS Lexington, also at 10.

The Ranger will be berthed at Pier 3, Alameda Naval Air Station, the Lexington at Pier 50 and the Eldorado at Pier 4, Oakland Inner Harbor.

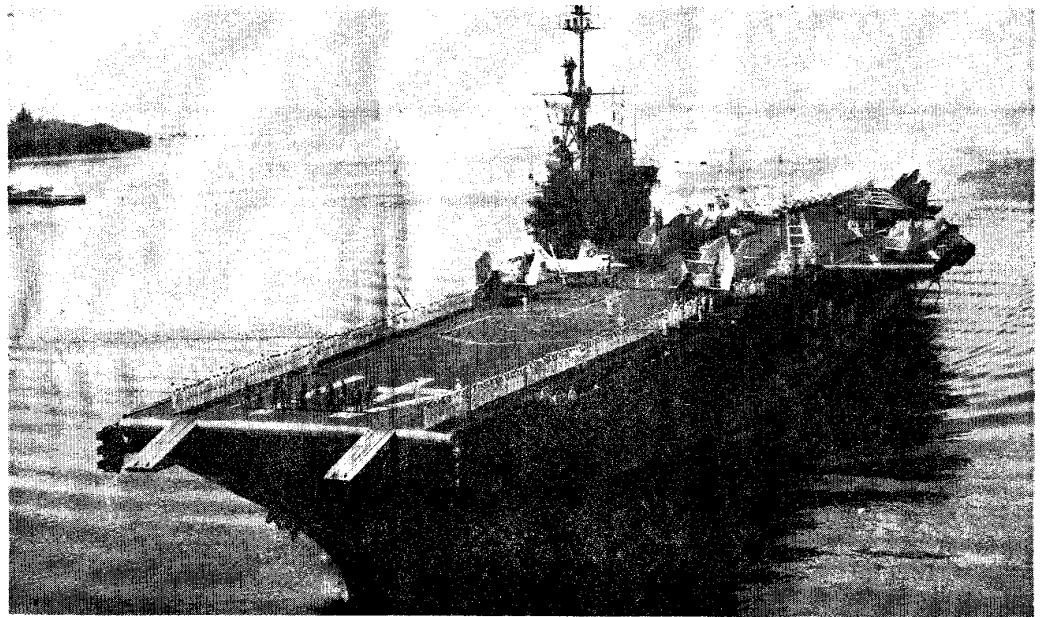
Fleet's In for Pacific Festival



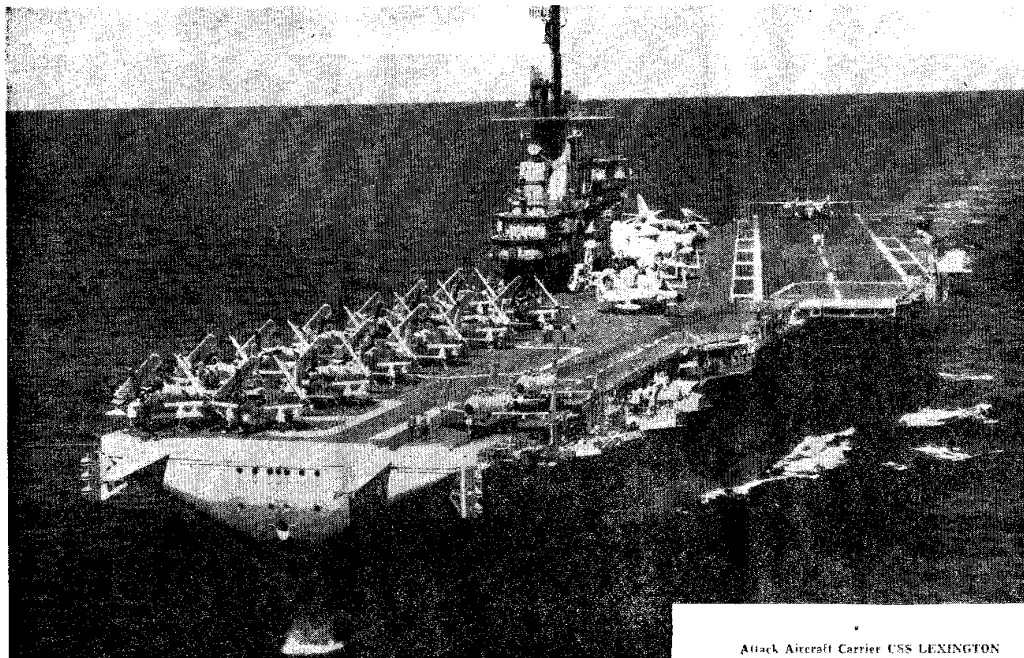
First Fleet flagship, cruiser USS LOS ANGELES
Open house at Pier 18.



ADMIRAL JOHN H. SIDES
Pacific Fleet commander, will review First Fleet



Attack Aircraft Carrier USS MIDWAY—Not open to public.



Attack Aircraft Carrier USS LEXINGTON
Will dock at Pier 30.

San Francisco welcomes the First Fleet today.

In this fabled city, whose history is tied to the sea around it, the biggest men in town today are those of the U. S. Navy.

Their big, grey ships slid beneath the Golden Gate Bridge this morning to receive the welcome San Francisco traditionally reserves for those who guard our sea frontiers.

San Francisco is a city with salt water in its veins.

It loves a sailor, and it loves a party.

Plenty of both are on tap today with the arrival of the First Fleet and the start of the Pacific Festival.

The heartiest of welcomes, then, to the men of the First Fleet. May they enjoy their stay here as San Francisco enjoys their presence!

How Ships Line Up In Parade

The order of ships as today's First Fleet review steams past the flagship USS Los Angeles, beginning at noon:

- Lexington (CVA 16)
- Midway (CVA 41)
- Providence (CLG 6)
- Eldorado (AGC 11)
- Navarro (APA215)
- Pt. Defiance (LSD 31)
- Cabildo (LSD 16)
- Mathews (AKA 96)
- Merrick (AKA 97)
- Benner (DDR 807)
- Larson (DDR 830)
- Chevalier (DDR 805)
- Southerland (DDR743)
- Bridget (DE 1024)
- Capitaine (AG55 336)
- Persistent (MSO 491)
- Conflict (MSO 426)
- Dynamic (MSO 432)
- Endurance (MSO 435)
- Illusive (MSO 448)
- Implicit (MSO 455)



Vice Adm. Charles L. Nelson, First Fleet commander.

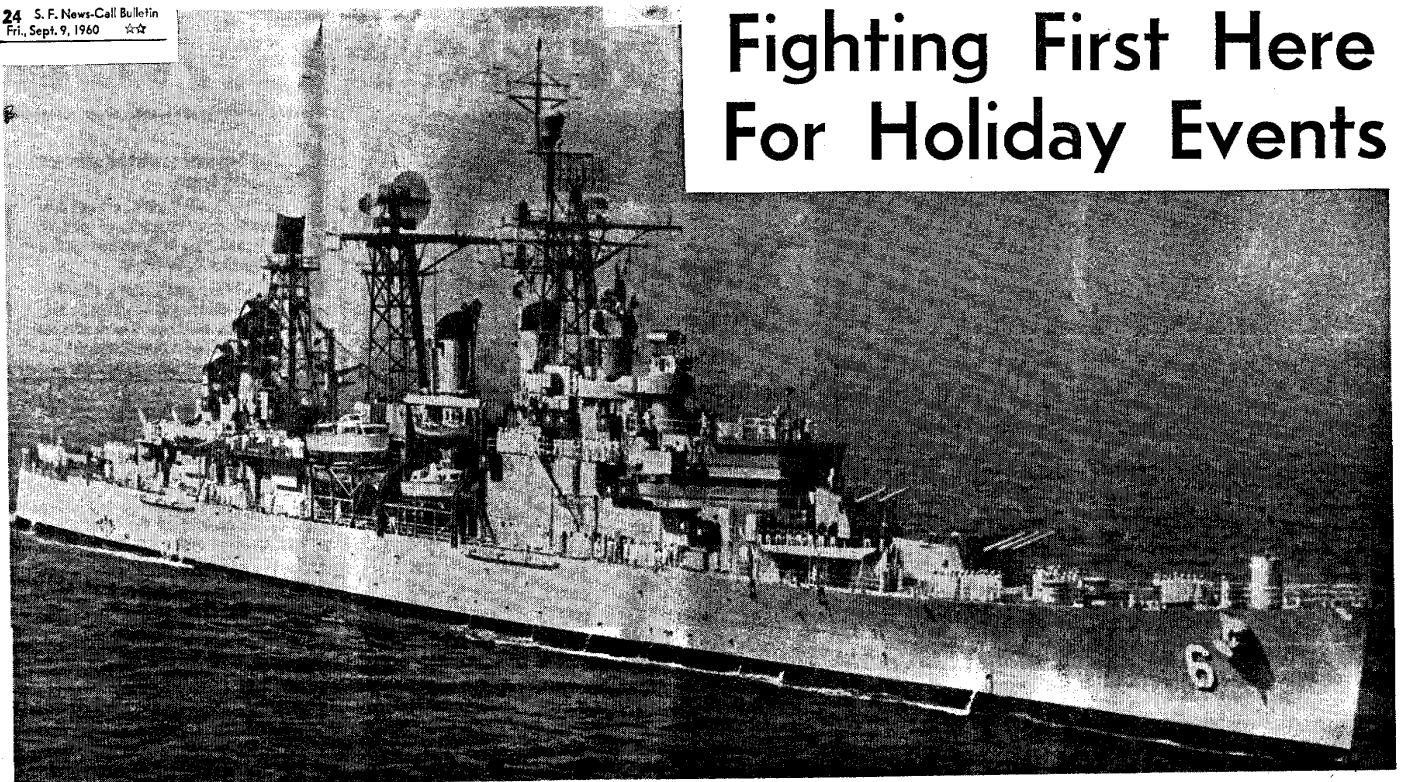


Rear Adm. William T. Nelson, Commander, Cruiser Div. Three.

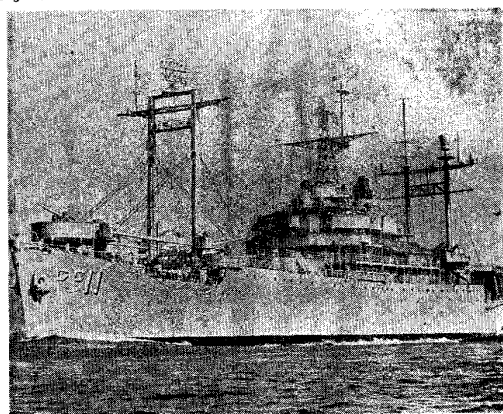


Rear Adm. Charles C. Kirkpatrick, Commander, Amphibious Group One.

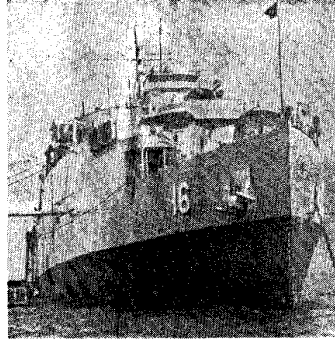
Fighting First Here For Holiday Events



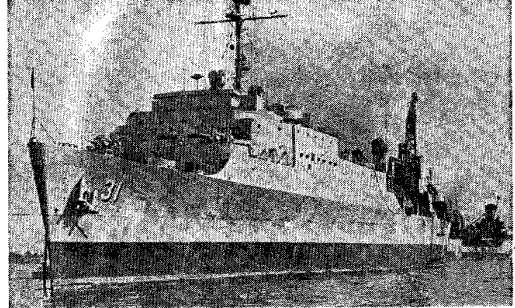
Light Cruiser USS PROVIDENCE—Docks at Pier 18.



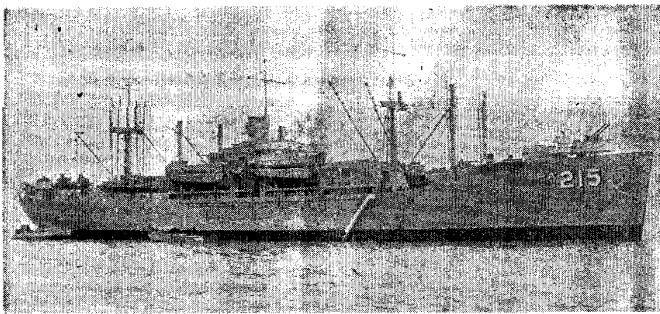
Amphibious Command Ship USS ELDORADO—Will berth in Oakland.



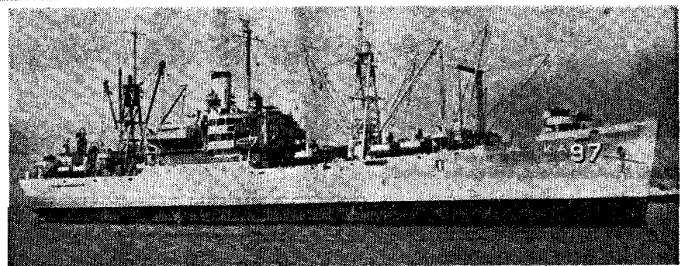
Landing Ship USS CABILDO—Docks at Oakland Outer Harbor.



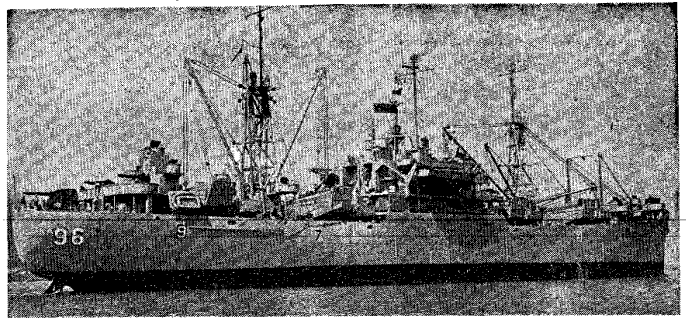
Landing Ship PT. DEFIANCE—May be seen at Pier 54.



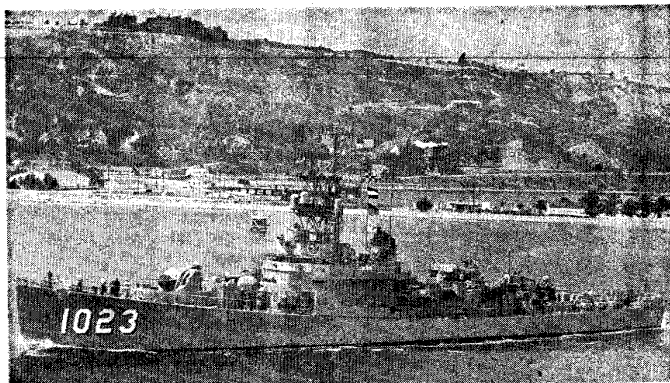
Attack Troop Transport USS NAVARRO—Visitors may board at Pier 34.



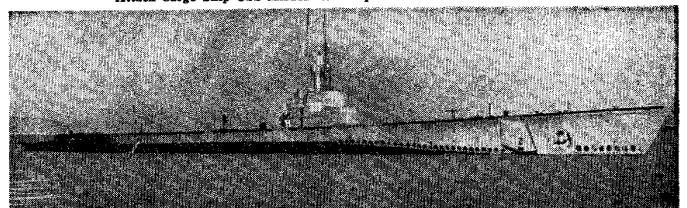
Attack Cargo Ship USS MERRICK—To berth at Oakland Naval Supply Center



Attack Cargo Ship USS MATHEWS—Open house at Oakland Outer Harbor

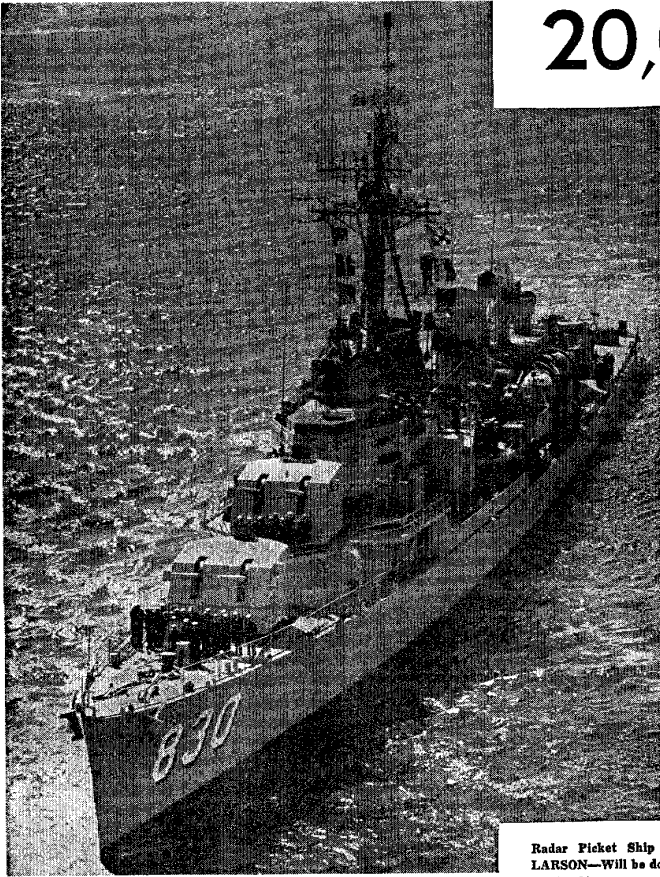


Destroyer Escort USS EVANS—On view at Oakland Inner Harbor

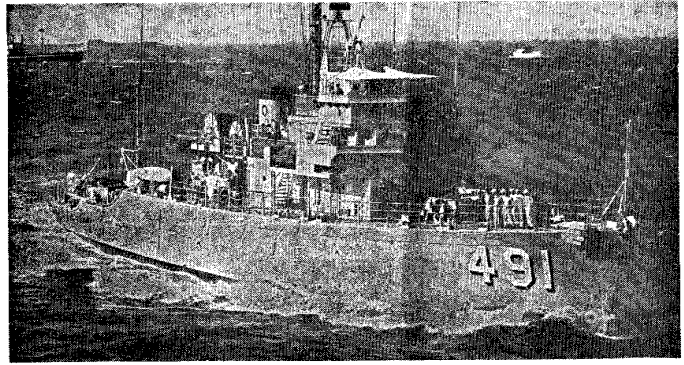


Submarine USS CAPITAINE—Will host visitors at Oakland Inner Harbor

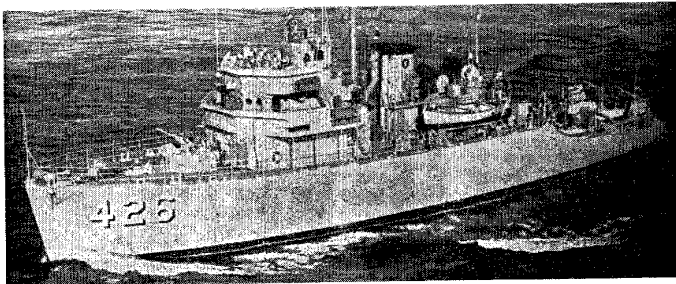
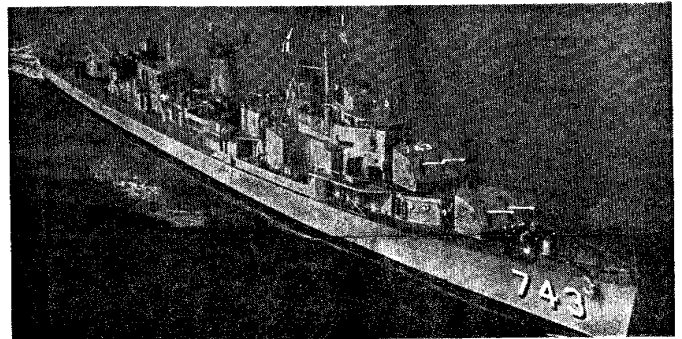
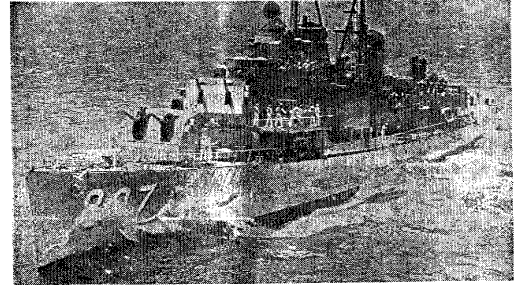
20,000 Sailors in Town



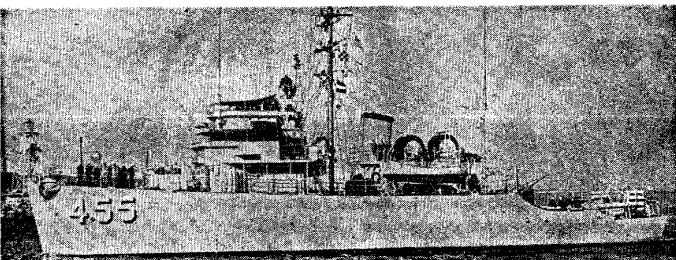
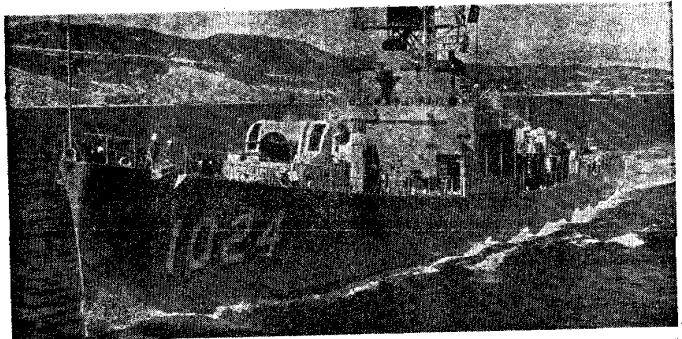
Radar Picket Ship **USS LARSON**—Will be docked at Pier 31.



Minesweeper **USS PERSISTENT** (above)—docks at Pier 54; Radar Picket Ship **USS BENNER** (right)—may be seen at Pier 54; Radar Picket Ship **USS SOUTHERLAND** (below)—ties up at Oakland Inner Harbor.

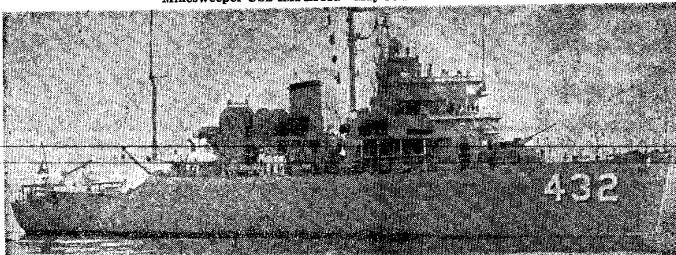
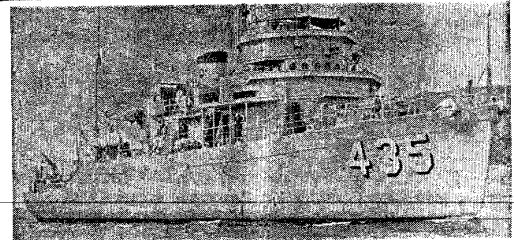


Minesweeper **USS CONFLICT**—Open to visitors at Pier 54

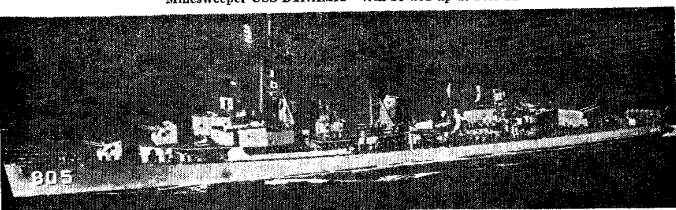
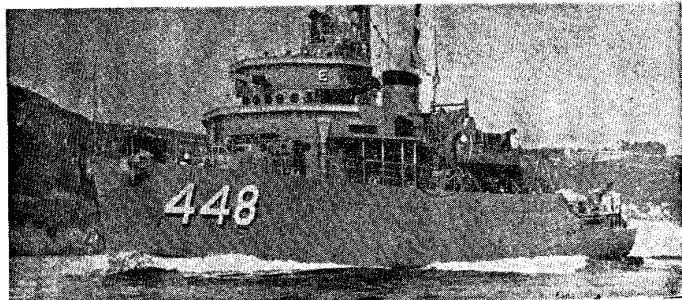


Minesweeper **USS IMPLICIT**—May be boarded at Pier 54

Destroyer Escort **USS BRIDGET** (above)—berths at Pier 48; Minesweepers **USS ENDURANCE** (right) and **USS ILLUSIVE** (below)—will hold open house at Pier 54.

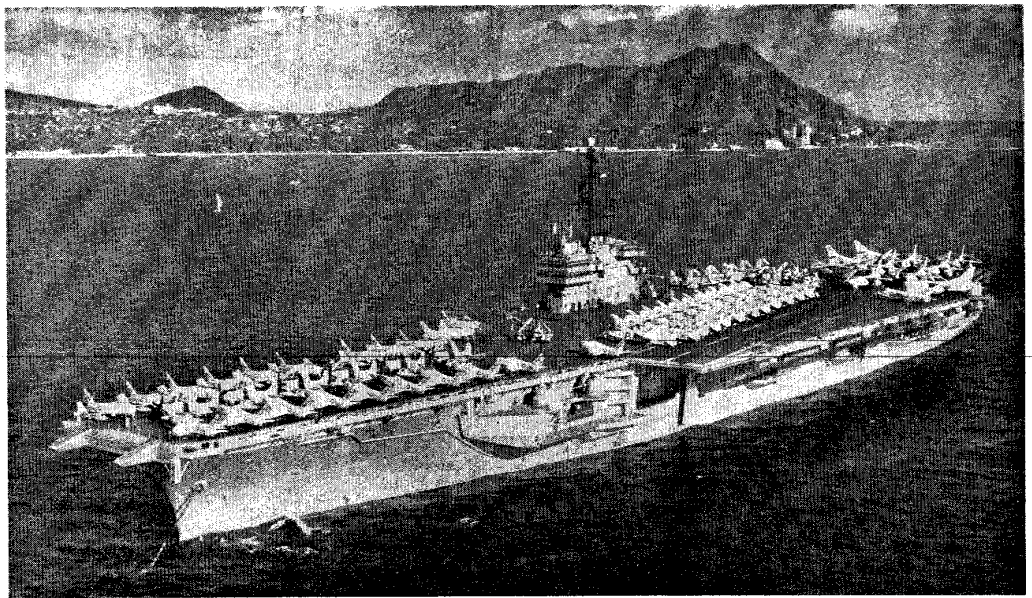


Minesweeper **USS DYNAMIC**—Will be tied up at Pier 54

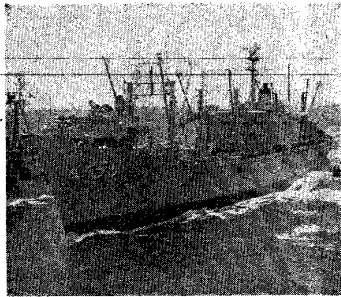


Radar Picket Ship **USS CHEVALIER**—Will dock Pier 31

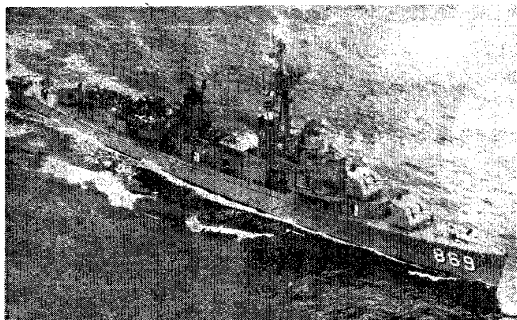
Liberty in Finest of All Ports



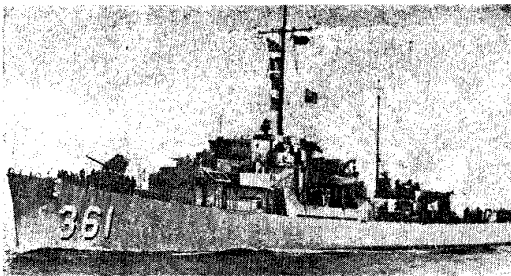
Attack Aircraft Carrier USS RANGER—Will tie up at Alameda Naval Air Station



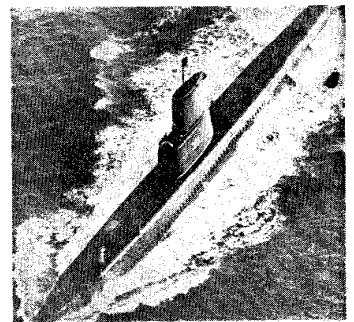
Refrigerator Ship USS VEGA
May be inspected at Naval Supply Center, Oakland



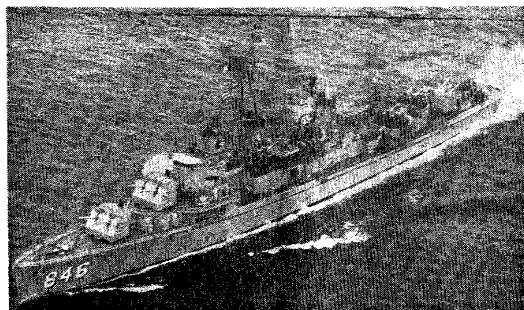
Destroyer USS ISBELL—At Pier 31, Sept. 17-18.



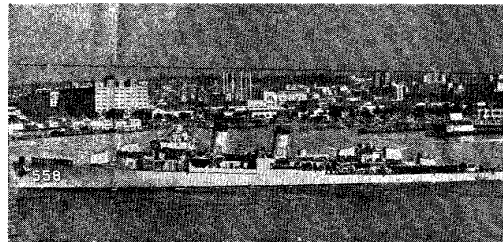
Destroyer Escort USS WALTON—Docks at Treasure Island



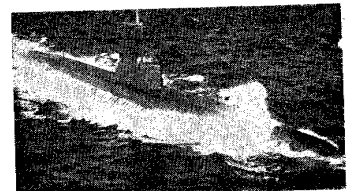
Submarine USS CAIMAN
Docks at Oakland Inner Harbor Wednesday.



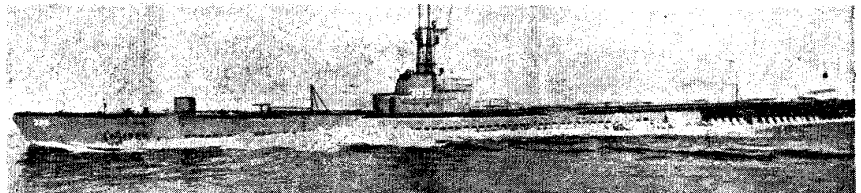
Destroyer USS OZBOURN—Coming to Pier 31 next week



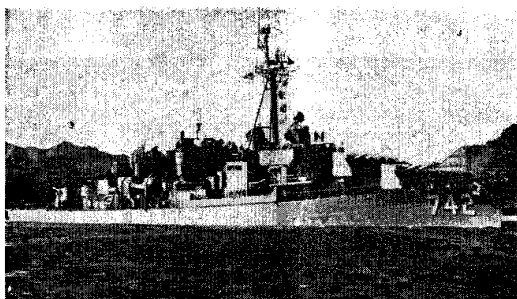
Destroyer USS LAWS—Hosts visitors at Treasure Island



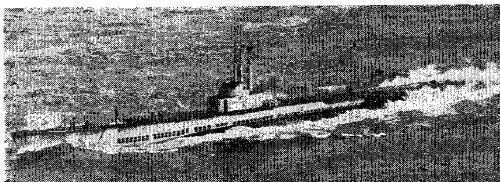
Submarine USS VOLADOR
Another Oakland visitor next Wednesday.



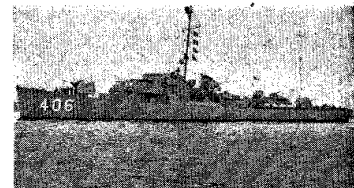
Submarine USS REDFISH—Arrives next Wednesday and docks at Pier 43.



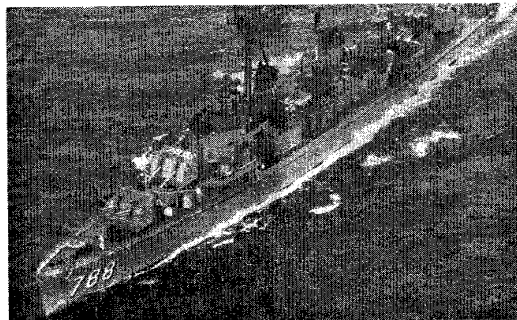
Radar Picket Ship USS KNOX—Late arrival at Pier 31



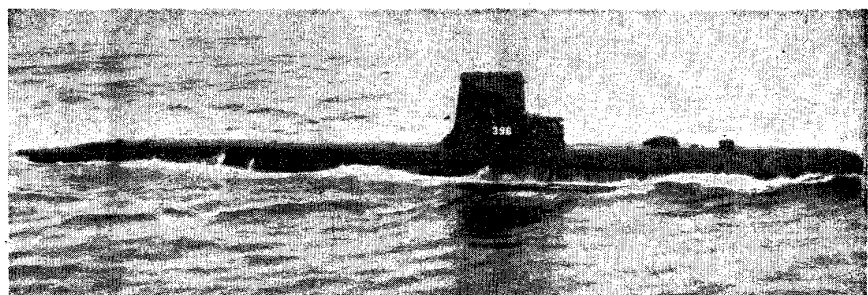
Submarine USS QUEENFISH—At Oakland Inner Harbor Wednesday



Destroyer Escort USS EDMONDS
May be seen at Treasure Island.



Destroyer USS HOLLISTER—Open at Pier 31, Sept. 17-18



Submarine USS RONQUIL—Arrives Pier 37-39 next Wednesday.