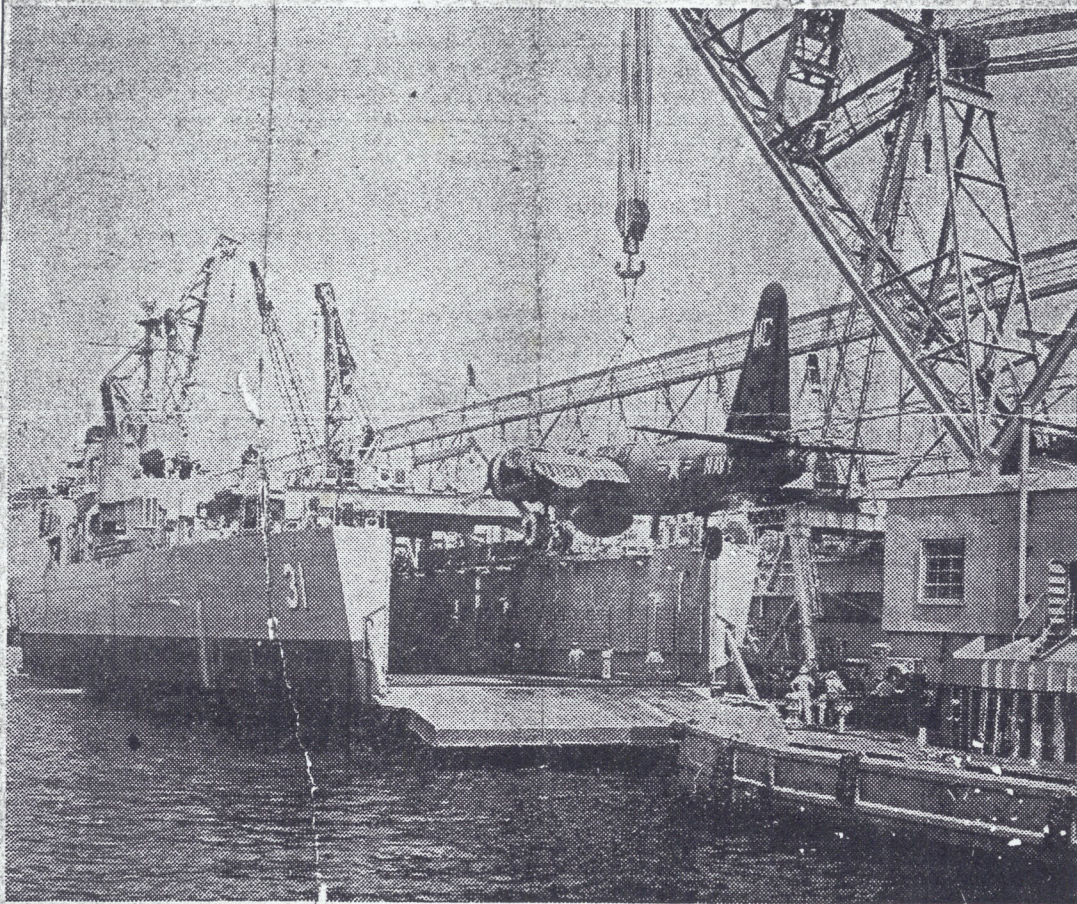


LSD 31

The Virginian-Pilot, Tuesday, June 21, 1955

*Planes Going to West Coast by Water*



Official U. S. Navy Photo

Naval Supply Center waterfront personnel loading a pair of P2V's aboard the LSD Point Defiance. The planes, destined for repairs at the Naval Air Station, Alameda, Calif., weigh 24 tons apiece. One plane was loaded on the tank deck of the ship, the other on the helicopter deck. The Supply Center's 100-ton capacity floating derrick was utilized on the job. The ship left Norfolk yesterday.